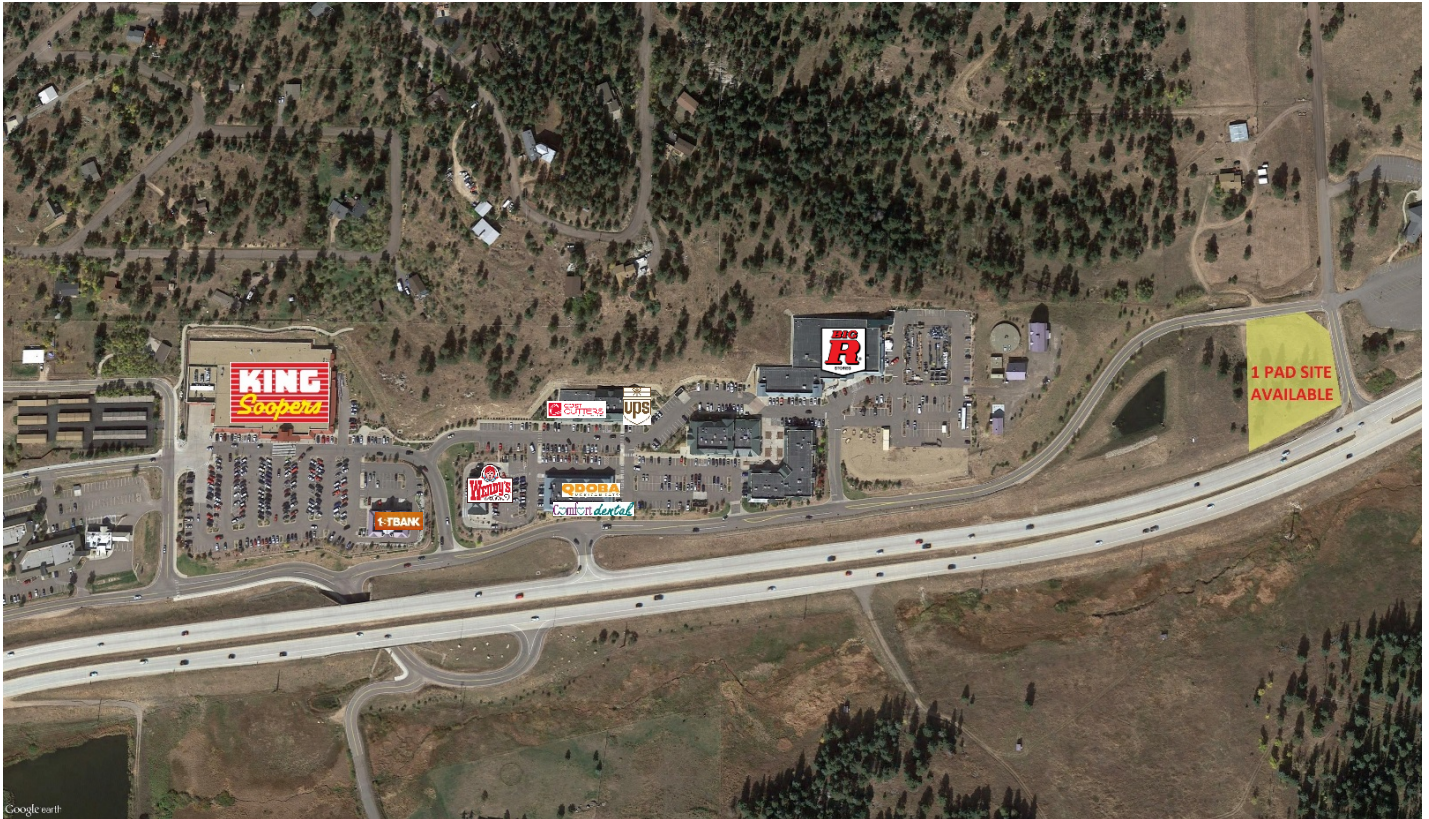


The Village at Conifer – Aspen Park

25637 Conifer Road | Conifer, CO

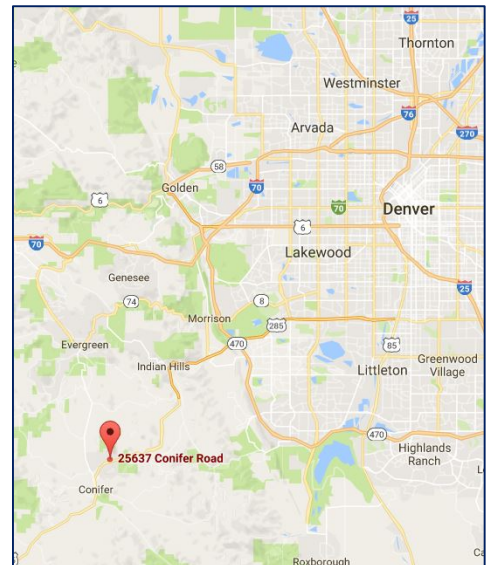


Highlights

- King Soopers Anchored Regional Shopping Center
- Only opportunity in region to have direct access and visibility from Highway 285
- Highway 285 | 29,000 VPD
- 1 Pad Site Remaining (+/- 36,671 SF | +/- 0.842 Acres)

Demographics

| | 1 Mile | 5 Mile | 10 Mile |
|-----------------|-----------|-----------|-----------|
| 2015 Population | 1,125 | 5,843 | 16,191 |
| Avg. HH Income | \$112,748 | \$109,993 | \$113,150 |



Co-Tenants



For More Information:

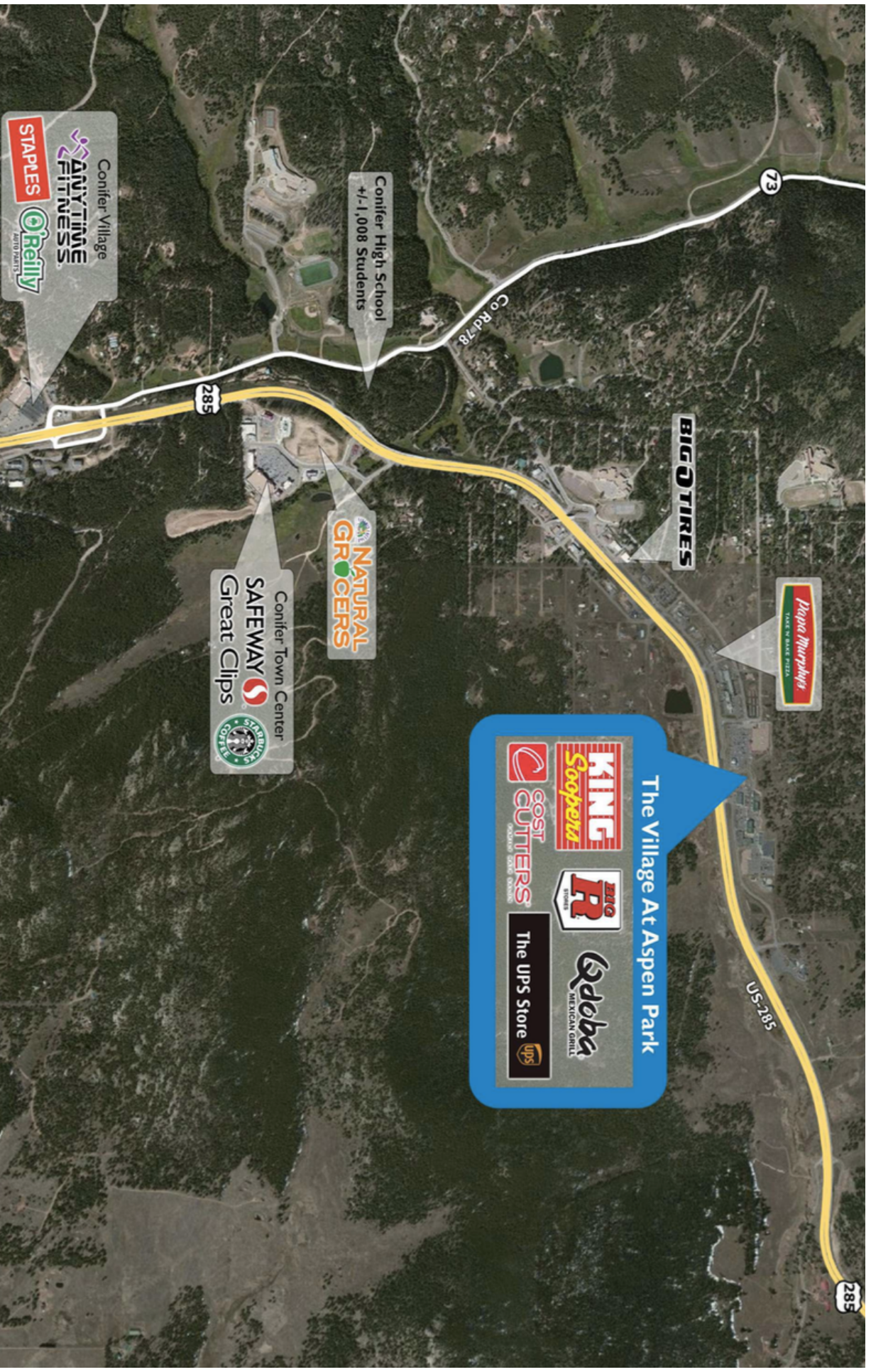
Jeff Williams
jeff@huntprop.com or 214-360-9600



HUNT PROPERTIES, INC.

The Village at Conifer – Aspen Park

25637 Conifer Road | Conifer, CO

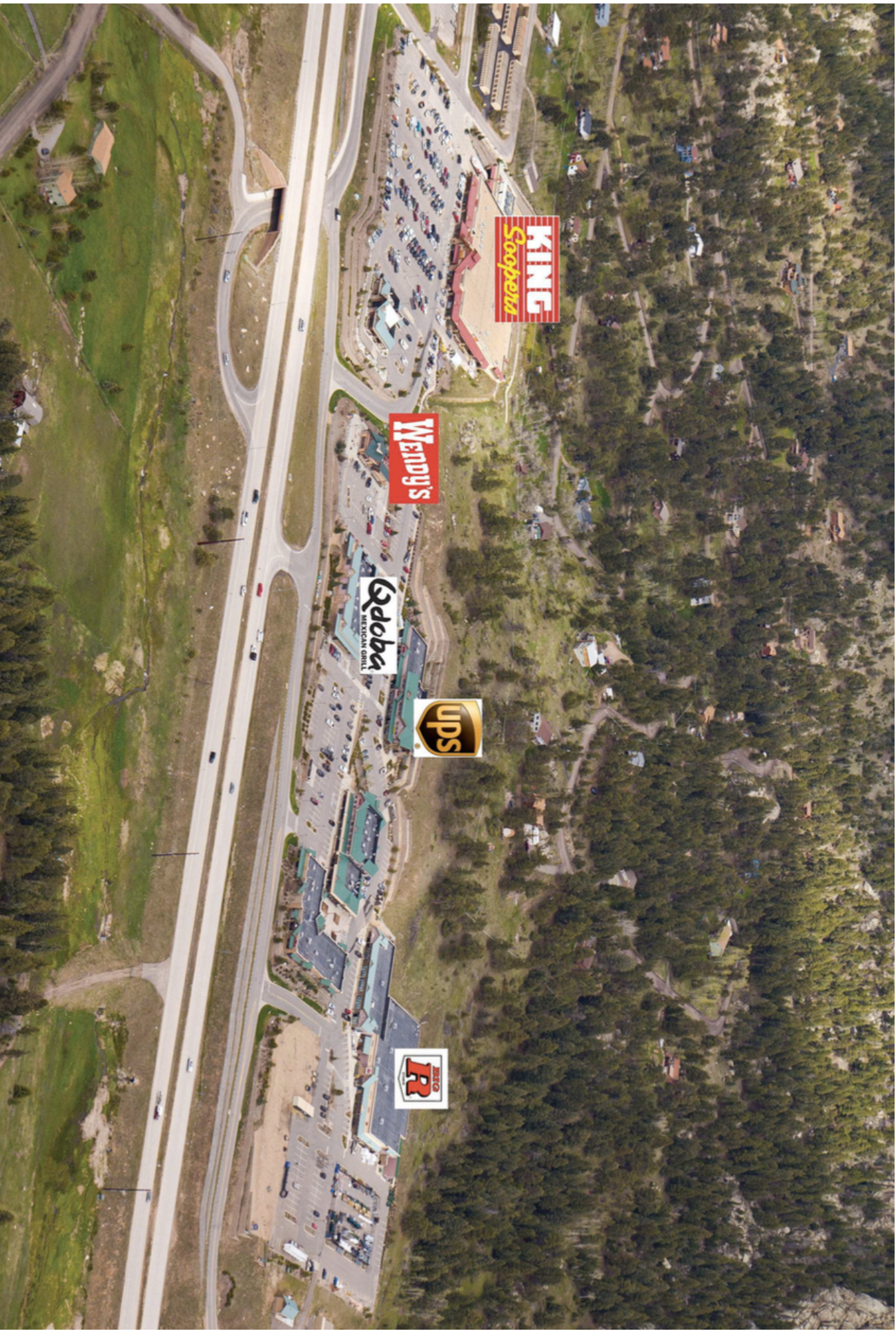




HUNT PROPERTIES, INC.

The Village at Conifer – Aspen Park

25637 Conifer Road | Conifer, CO






HUNT PROPERTIES, INC.

The Village at Conifer – Aspen Park

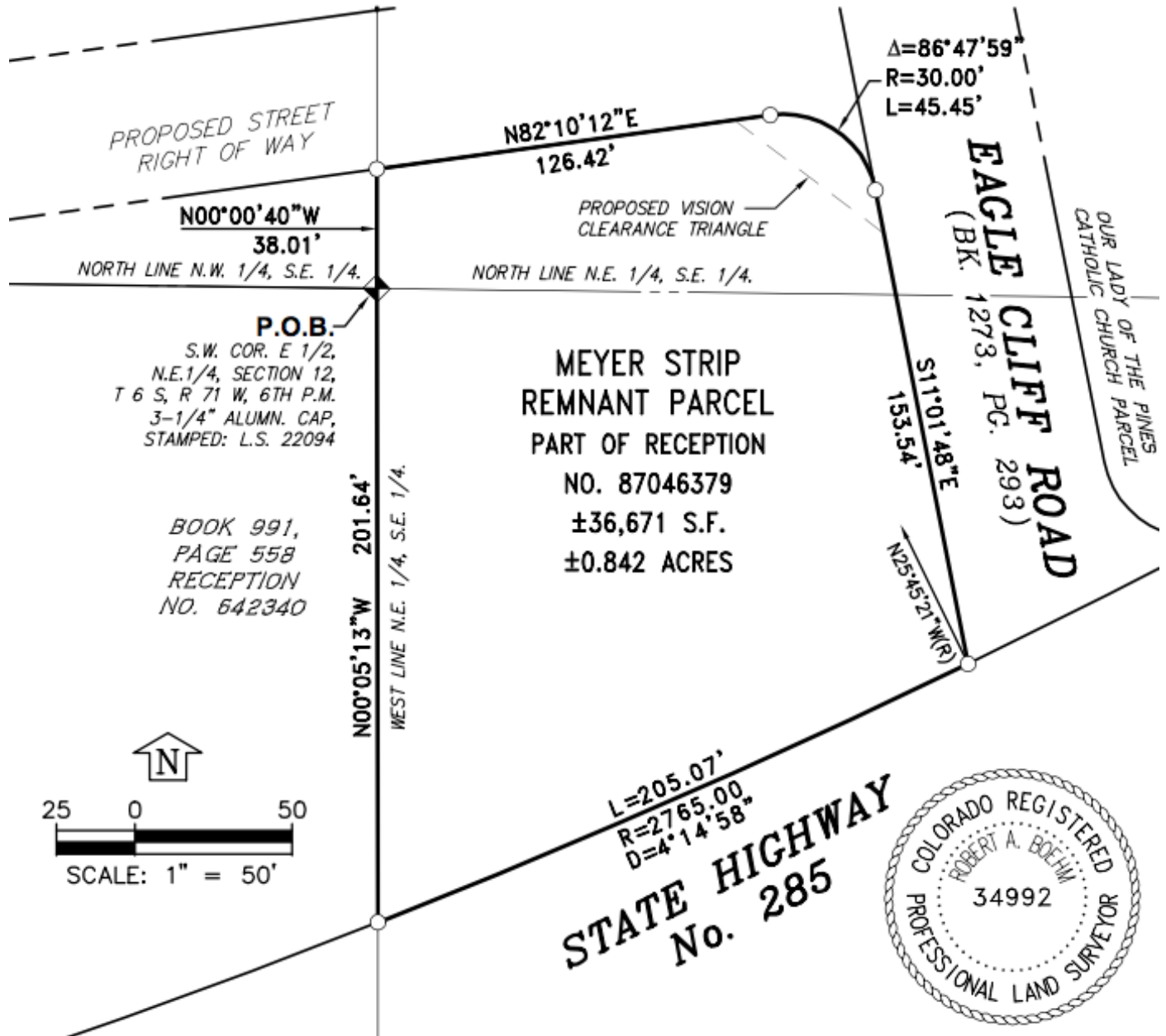
25637 Conifer Road | Conifer, CO

LEGEND:

P.O.B.  POINT OF BEGINNING
INDICATES CHANGE IN COURSE ONLY

NOTE:

THIS EXHIBIT DOES NOT REPRESENT A MONUMENTED SURVEY, IT IS INTENDED ONLY TO DEPICT THE ATTACHED DESCRIPTION.



BASIS OF BEARINGS BEING THE SOUTH LINE OF THE SOUTHWEST QUARTER OF THE NORTHEAST QUARTER WHICH BEARS N89°16'26"W BETWEEN A 3.25" ALUMINUM CAPPED MONUMENT ON THE EAST END, MARKED PLS 22094, E1/16 S12 T6S R71W AND A 3.25" ALUMINUM CAPPED MONUMENT ON THE WEST END, MARKED LS 16401 C1/4 S12 T6S R71W 1999, SAID BEARING WAS DETERMINED FROM A GLOBAL POSITIONING SYSTEM (GPS) SURVEY BASED ON THE COLORADO HIGH ACCURACY REFERENCE NETWORK (HARN).

| dlenda | P:\4 digit\3805\dwg\exhibits\2004\EXHB-MEYER-STRIP-REMNANT.DWG | DATE: 04/22/2004 | Time: 14:25 |

Demographic Summary Report

1990 - 2000 Census, 2015 Estimates & 2020 Projections

Calculated using TAS Retrieval Retrieval



Apr 26, 2016

Latitude: 39.544336 Longitude: -105.292136

| The Village at Aspen Park Conifer, CO | | 1.00 Mile Radius | 3.00 Mile Radius | 5.00 Mile Radius | 10.00 Mile Radius |
|--|---------------------------------------|------------------|------------------|------------------|-------------------|
| Population | Q4 2015 Estimated Population | 1,125 | 5,843 | 16,191 | 78,523 |
| | 2020 Projected Population | 1,138 | 5,967 | 16,521 | 80,899 |
| | 2010 Census Population | 1,091 | 5,617 | 15,605 | 75,496 |
| | 2000 Census Population | 1,078 | 5,738 | 15,654 | 72,641 |
| | 1990 Census Population | 1,039 | 4,961 | 12,871 | 51,490 |
| | Historical Annual Growth 1990 to 2000 | 0.37% | 1.47% | 1.98% | 3.50% |
| | Historical Annual Growth 2000 to 2010 | 0.12% | -0.21% | -0.03% | 0.39% |
| | Estimated Annual Growth 2010 to 2015 | 0.52% | 0.69% | 0.64% | 0.69% |
| | Projected Annual Growth 2015 to 2020 | 0.23% | 0.42% | 0.41% | 0.60% |
| | Median Age | 49.3 | 50.6 | 50.9 | 47.1 |
| Households | Q4 2015 Estimated Households | 431 | 2,313 | 6,532 | 30,823 |
| | 2020 Projected Households | 436 | 2,361 | 6,663 | 31,819 |
| | 2010 Census Households | 418 | 2,223 | 6,294 | 29,554 |
| | 2000 Census Households | 415 | 2,147 | 5,913 | 26,472 |
| | 1990 Census Households | 361 | 1,798 | 4,777 | 18,093 |
| | Historical Annual Growth 1990 to 2000 | 1.38% | 1.79% | 2.16% | 3.88% |
| | Historical Annual Growth 2000 to 2015 | 0.08% | 0.35% | 0.63% | 1.11% |
| | Estimated Annual Growth 2000 to 2015 | 0.53% | 0.69% | 0.65% | 0.73% |
| | Projected Annual Growth 2015 to 2020 | 0.22% | 0.41% | 0.40% | 0.64% |
| | Population per Household | 2.61 | 2.53 | 2.48 | 2.54 |
| Population by Race | White | 94.5% | 93.9% | 93.7% | 90.5% |
| | Black or African American | 0.2% | 0.3% | 0.3% | 0.5% |
| | Asian & Pacific Islander | 1.0% | 0.8% | 0.7% | 1.4% |
| | Other Races | 0.9% | 1.1% | 1.3% | 1.8% |
| | Hispanic Population | 3.5% | 3.9% | 3.9% | 5.9% |
| Income | Average Household Income | \$112,748 | \$109,993 | \$113,150 | \$118,559 |
| | Median Household Income | \$98,504 | \$95,171 | \$93,763 | \$94,885 |
| | Per Capita Income | \$43,182 | \$43,548 | \$45,664 | \$46,685 |
| Education (Age 25+) | Elementary | 0.8% | 0.4% | 0.4% | 0.4% |
| | Some High School | 2.5% | 2.4% | 2.0% | 1.9% |
| | High School Graduate | 16.0% | 17.7% | 16.7% | 15.0% |
| | Some College | 24.5% | 22.7% | 20.8% | 20.8% |
| | Associates Degree Only | 7.3% | 7.3% | 8.8% | 8.0% |
| | Bachelors Degree Only | 36.8% | 33.2% | 32.1% | 32.3% |
| | Graduate Degree | 12.0% | 16.3% | 19.3% | 21.4% |
| Business | Number of Businesses | 98 | 285 | 576 | 2,572 |
| | Total Number of Employees | 648 | 1,873 | 3,708 | 23,991 |
| | Employees per Business | 6.59 | 6.56 | 6.44 | 9.33 |
| | Residential Population per Business | 11.45 | 20.47 | 28.13 | 30.54 |

This report was produced using data from private and government sources deemed to be reliable and is herein provided without representation or warranty.